

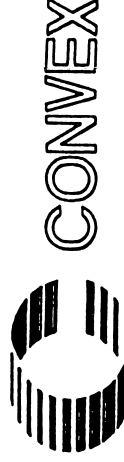
CONCENTRATOR CARD (POWER SYSTEM)

CONTENTS

1. TITLE PAGE
2. CONNECTORS
3. LOGIC

THIS DOCUMENT CONTAINS INFORMATION PROPRIETARY TO CONVEX COMPUTER CORPORATION (CONVEX). USE OR DISCLOSURE WITHOUT THE WRITTEN PERMISSION OF AN OFFICER OF CONVEX IS EXPRESSLY FORBIDDEN. COPYRIGHT (C) CONVEX 1994

CONVEX DEFINE
X_FIRST=0
X_STEP=SIZE
DEF_MOUNT=DIP



TITLE: POWER CONCENTRATOR CARD
DRAWING: 410-001377-300A REV 0.0
REVISED: Mon Dec 6 14:01:51 1993

ABBR: CONC
ENGR: SCHMITT

PAGE: 1 OF 3

8

7

6

3

2

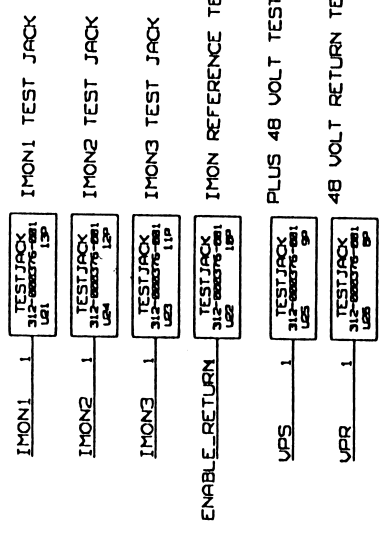
1

HDR16 301-000102-004
 MALE, 4 WALL, SQUARE STRAIGHT POST, Ø.066 END
 US 22P

1	NENOUGH-A
2	PSBADA
3	PERINDOKA
4	PERCHNOKA
5	NENOUGH-B
6	PSBADB
7	PERINDOKB
8	PERCHNOKB
9	GND
10	SPOKRETA
11	NBPRES*
12	SPOKRETB
13	GND
14	NBPRES*
15	GND
16	GND

HDR26 301-000102-003
 MALE, 4 WALL, SQUARE STRAIGHT POST, Ø.066 END
 UI 9 21P

1	ENABLE1
2	SV1
3	ENABLE_RETURN
4	IMON1
5	ENABLE2
6	SV2
7	ENABLE_RETURN
8	IMON2
9	ENABLE3
10	SV3
11	ENABLE_RETURN
12	IMON3
13	VPR
14	POKINC
15	GND
16	POKINO
17	GND
18	POKENC
19	GND
20	POKNGO
21	POKINC
22	GND
23	POK3NO
24	GND
25	UPS
26	UPS



HDR4 301-000012-002
 MALE, 4 WALL, SQUARE STRAIGHT POST, W/ STANDOFFS
 US 17P

1	KSWIN+
2	ENABLE_RETURN
3	GND
4	GND

HDR3 301-000012-001
 MALE, 4 WALL, SQUARE STRAIGHT POST, W/ STANDOFFS
 UI 18P

1	KSHOUT+
2	KSHOUT-
3	GND

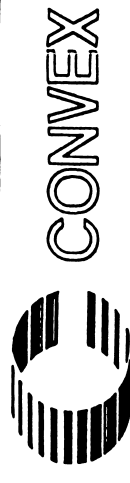
HDR5 301-000012-003
 MALE, 4 WALL, SQUARE STRAIGHT POST, W/ STANDOFFS
 US 19P

1	REM_PER_RET
2	REM_PER
3	AUX_NC
4	AUX_COMMON
5	AUX_NO
6	GND

HDR10 301-000102-005
 MALE, 4 WALL, SQUARE STRAIGHT POST, Ø.066 END
 US 20P

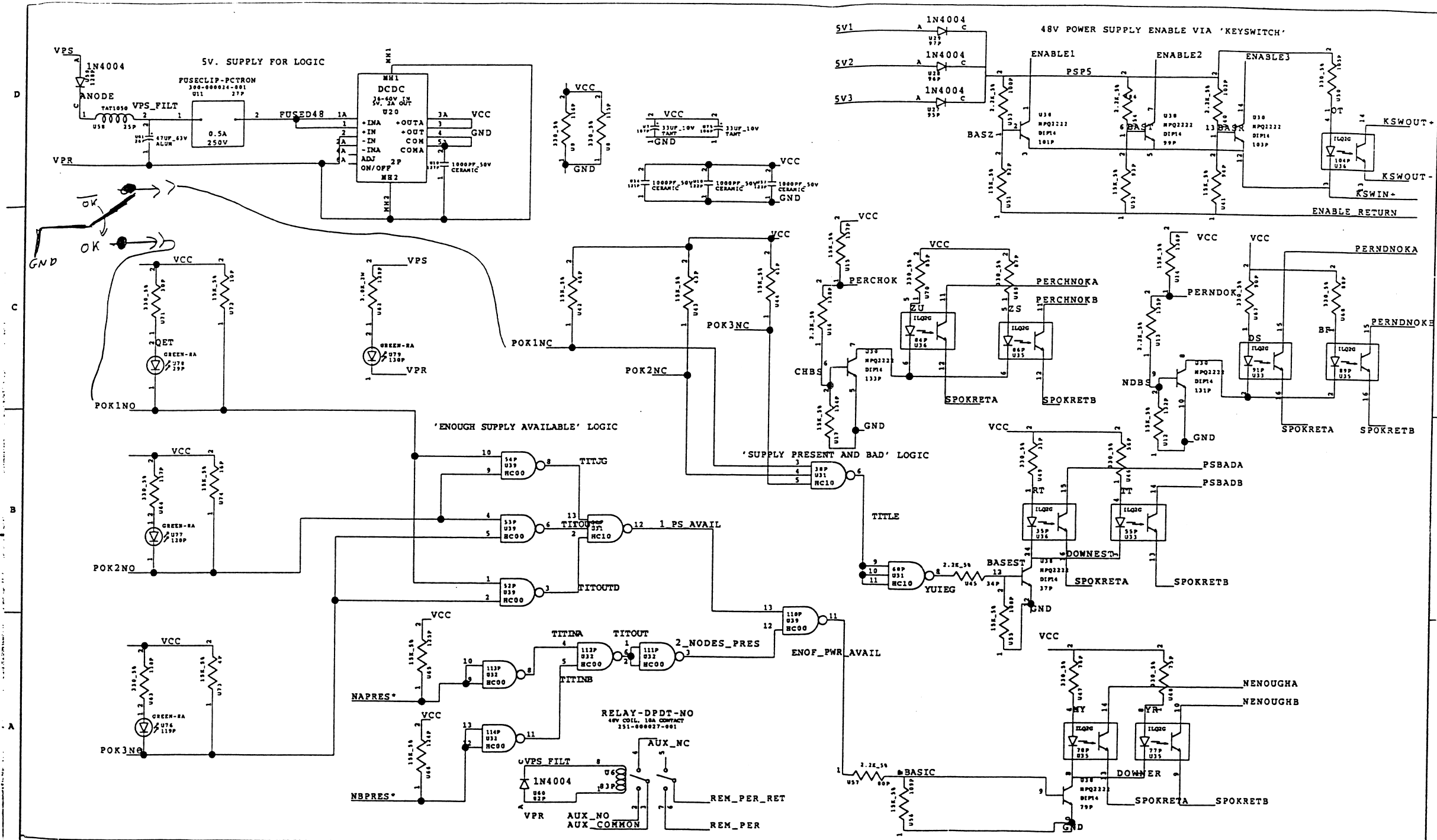
1	PERCHOK
2	GND
3	GND
4	PERNDOK
5	GND
6	GND
7	GND
8	GND
9	GND
10	GND

THIS DOCUMENT CONTAINS INFORMATION PROPRIETARY TO CONVEX COMPUTER CORPORATION (CONVEX). USE OR DISCLOSURE WITHOUT THE WRITTEN PERMISSION OF AN OFFICER OF CONVEX IS EXPRESSLY FORBIDDEN. COPYRIGHT (C) CONVEX 1994



TITLE: POWER CONCENTRATOR CARD
 DRAWING: 410-001377-300A REV 0.0
 REVISED: Mon Dec 6 14:02:31 1993

ABBR: CONC
 ENGR: SCHMITT



THIS DOCUMENT CONTAINS INFORMATION PROPRIETARY TO CONVEX COMPUTER CORPORATION (CONVEX). USE OR DISCLOSURE WITHOUT THE WRITTEN PERMISSION OF AN OFFICER OF CONVEX IS EXPRESSLY FORBIDDEN. COPYRIGHT (C) CONVEX 1994



TITLE:	CONC	ABBR:	CONC
DRAWING:	410-001377-300A REV 0.0	ENGR:	SCHMITT
REVISED:	Mon Dec 6 14:03:12 1993	PAGE:	3 OF 3
	3		2
			1

D

I/O POWER BACKPLANE

C

CONTENTS

- 1. TITLE PAGE
- 2. BRICK CIRCUITS
- 3. CONTROL CIRCUITRY
- 4. BOARD CONNECTORS

B

A

THIS DOCUMENT CONTAINS INFORMATION PROPRIETARY TO CONVEX COMPUTER CORPORATION (CONVEX). USE OR DISCLOSURE WITHOUT THE WRITTEN PERMISSION OF AN OFFICER OF CONVEX IS EXPRESSLY FORBIDDEN. COPYRIGHT (C) CONVEX 1994

CONVEX DEFDEF
 X_FIRST=0
 X_STEP=SIZE
 DEF_MOUNT=DIP



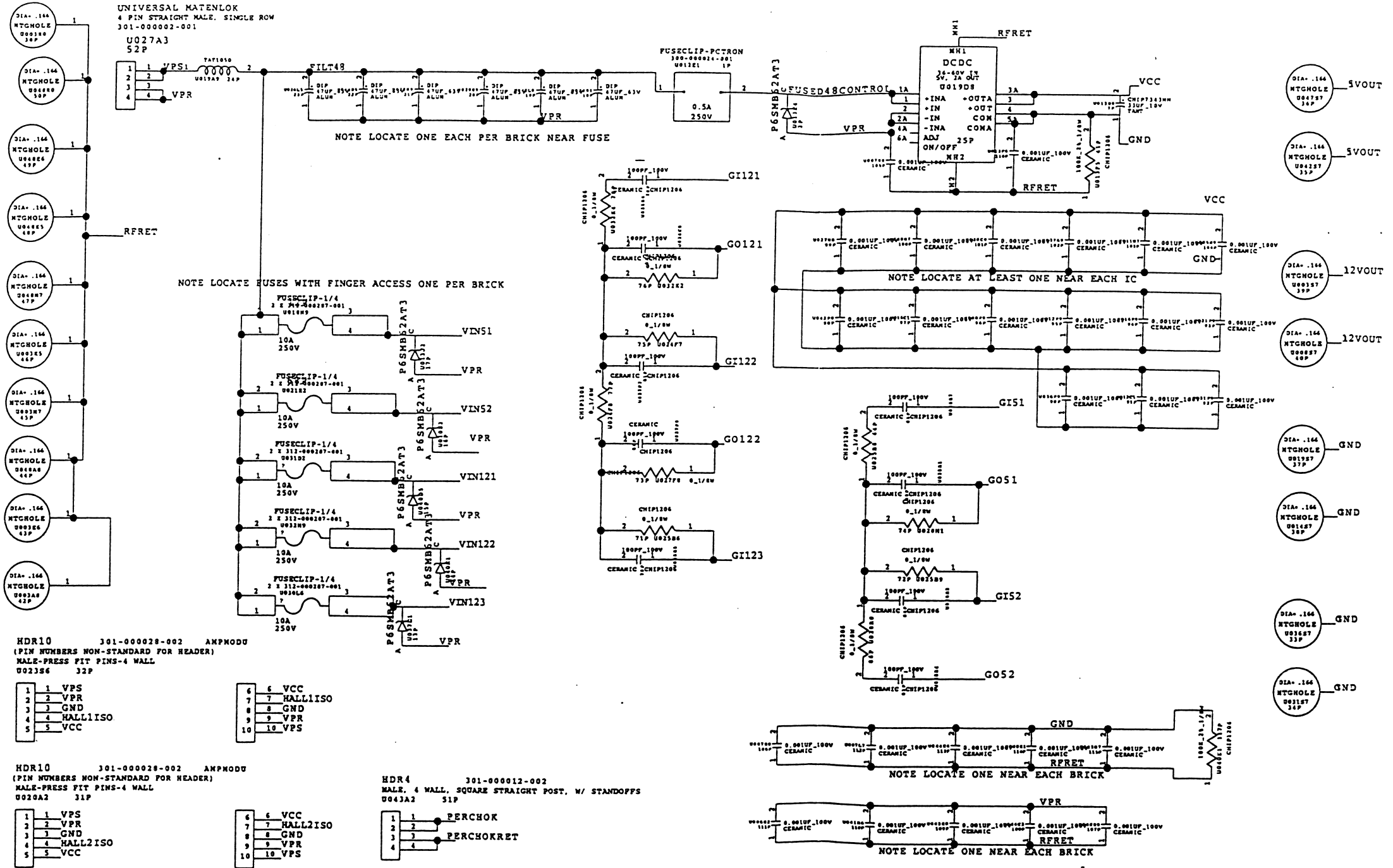
CONVEX

TITLE: I/O POWER BACKPLANE (REVISED)		ABBR: CIOPC
DRAWING: 410-002442-300B REV 0.0		ENGR: SCHMITT
REVISED: Mon Jun 27 10:18:10 1994	PAGE: 1 OF 4	
3	2	1

8

7

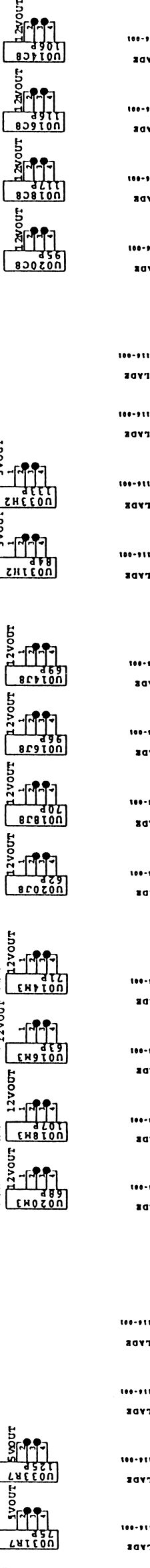
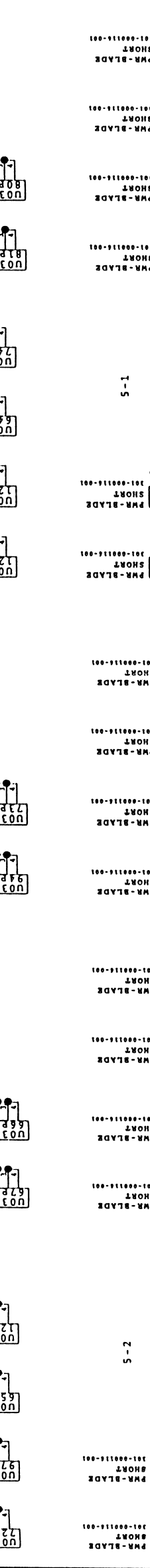
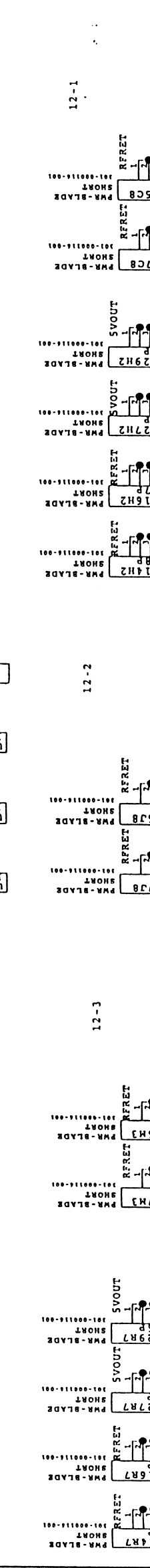
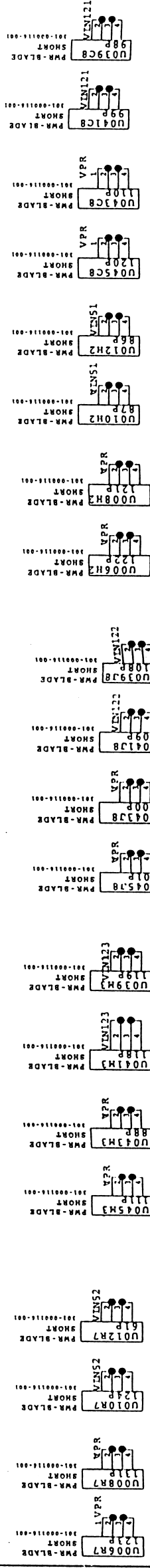
6



THIS DOCUMENT CONTAINS INFORMATION PROPRIETARY TO CONVEX COMPUTER CORPORATION (CONVEX). USE OR DISCLOSURE WITHOUT THE WRITTEN PERMISSION OF AN OFFICER OF CONVEX IS EXPRESSLY FORBIDDEN. COPYRIGHT (C) CONVEX 1994



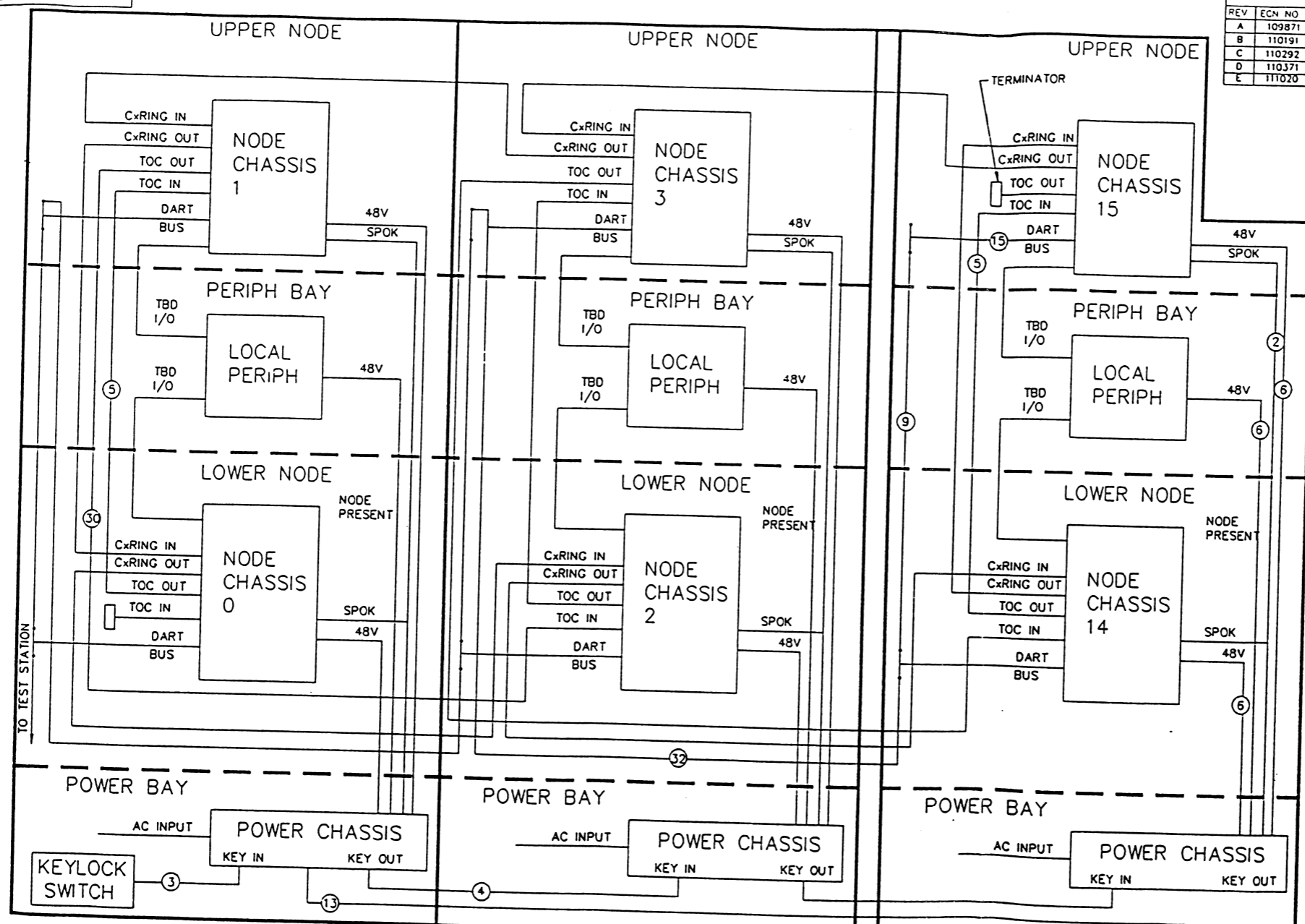
TITLE: I/O POWER BACKPLANE (REVISED)		ABBR: CIOPC
DRAWING: 410-002442-300B REV 0.0		ENGR: SCHMITT
REVISED: Tue Jun 28 10:02:25 1994	PAGE: 2 OF 4	



11	12	13	14	15	16	17	18	19	20	21	22	23	24	25	26	27	28	29	30	31	32	33	34	35	36	37	38	39	40	41	42	43	44	45	46	47	48	49	50	51	52	53	54	55	56	57	58	59	60	61	62	63	64	65	66	67	68	69	70	71	72	73	74	75	76	77	78	79	80	81	82	83	84	85	86	87	88	89	90	91	92	93	94	95	96	97	98	99	100
----	----	----	----	----	----	----	----	----	----	----	----	----	----	----	----	----	----	----	----	----	----	----	----	----	----	----	----	----	----	----	----	----	----	----	----	----	----	----	----	----	----	----	----	----	----	----	----	----	----	----	----	----	----	----	----	----	----	----	----	----	----	----	----	----	----	----	----	----	----	----	----	----	----	----	----	----	----	----	----	----	----	----	----	----	----	----	----	----	-----

ALL DIMENSIONS ARE IN INCHES UNLESS OTHERWISE SPECIFIED
 TOLERANCES: .XX ± .02
 .XX ± .010
 ANGLES ± 1°
 HOLE DIA ± .005
 REMOVE ALL BURRS, SHARP EDGES, AND SHARP CORNERS
 INTERPRET PER ANSI Y14.5
 THIRD ANGLE
 UNLESS OTHERWISE SPECIFIED
 ALL DIMENSIONS ARE IN INCHES
 TOLERANCES:
 .XX ± .02
 .XX ± .010
 ANGLES ± 1°
 HOLE DIA ± .005
 REMOVE ALL BURRS, SHARP EDGES, AND SHARP CORNERS
 INTERPRET PER ANSI Y14.5
 THIRD ANGLE

REV	ECN NO	DESCRIPTION	ORIG	APVD	DATE
A	109871	INITIAL RELEASE	PBRIDGES	LPRICE	3/30/93
B	110191	REPLACE SHEET 2 WITH NEW SHEET	LPRICE	LPRICE	10/22/93
C	110292	ADD WIRE, CHG CB P.2	JDAY	JRD	10/25/93
D	110371	UL REQUIREMENTS CHANGES	JDAY	JDAY	12/16/93
E	111020	MAJOR UPDATE, CREATE BOX	CEIST	EDG	10/07/94



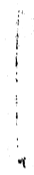
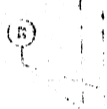
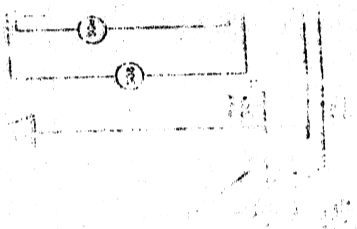
1st NODE CABINET 2nd NODE CABINET LAST NODE CABINET SEE SEPARATE BILL OF MATERIAL

TO TEST STATION

REMOTE PERIPHERAL ENABLE REMOTE PERIPHERAL CABINET

MATERIAL: N/A	UNLESS OTHERWISE SPECIFIED ALL DIMENSIONS ARE IN INCHES TOLERANCES: .XX ± .02 .XX ± .010 ANGLES ± 1° HOLE DIA ± .005	 CONVEX COMPUTER CORPORATION RICHARDSON, TEXAS 75080 WIRING DIAGRAM, CAMELOT CABINET
FINISH: N/A	REMOVE ALL BURRS, SHARP EDGES, AND SHARP CORNERS INTERPRET PER ANSI Y14.5 THIRD ANGLE	
BY P. BRIDGES DATE 01/02/93	DATE 03/31/93	D 550-000053-300 SHEET 1 OF 3

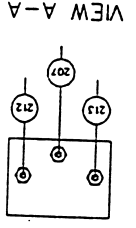
DRAWING NO. 550-000053-300 SHEET 1 OF 3



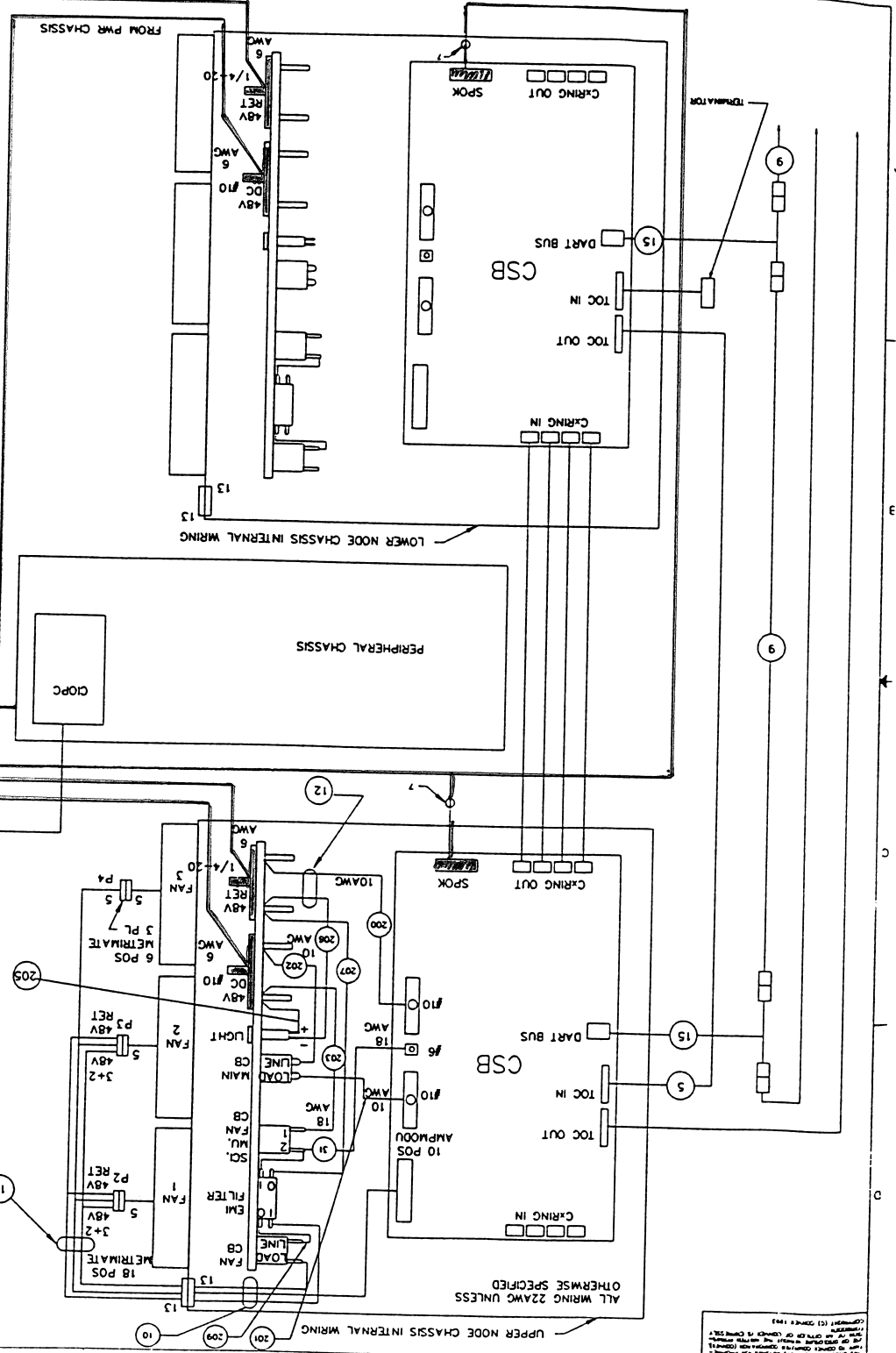
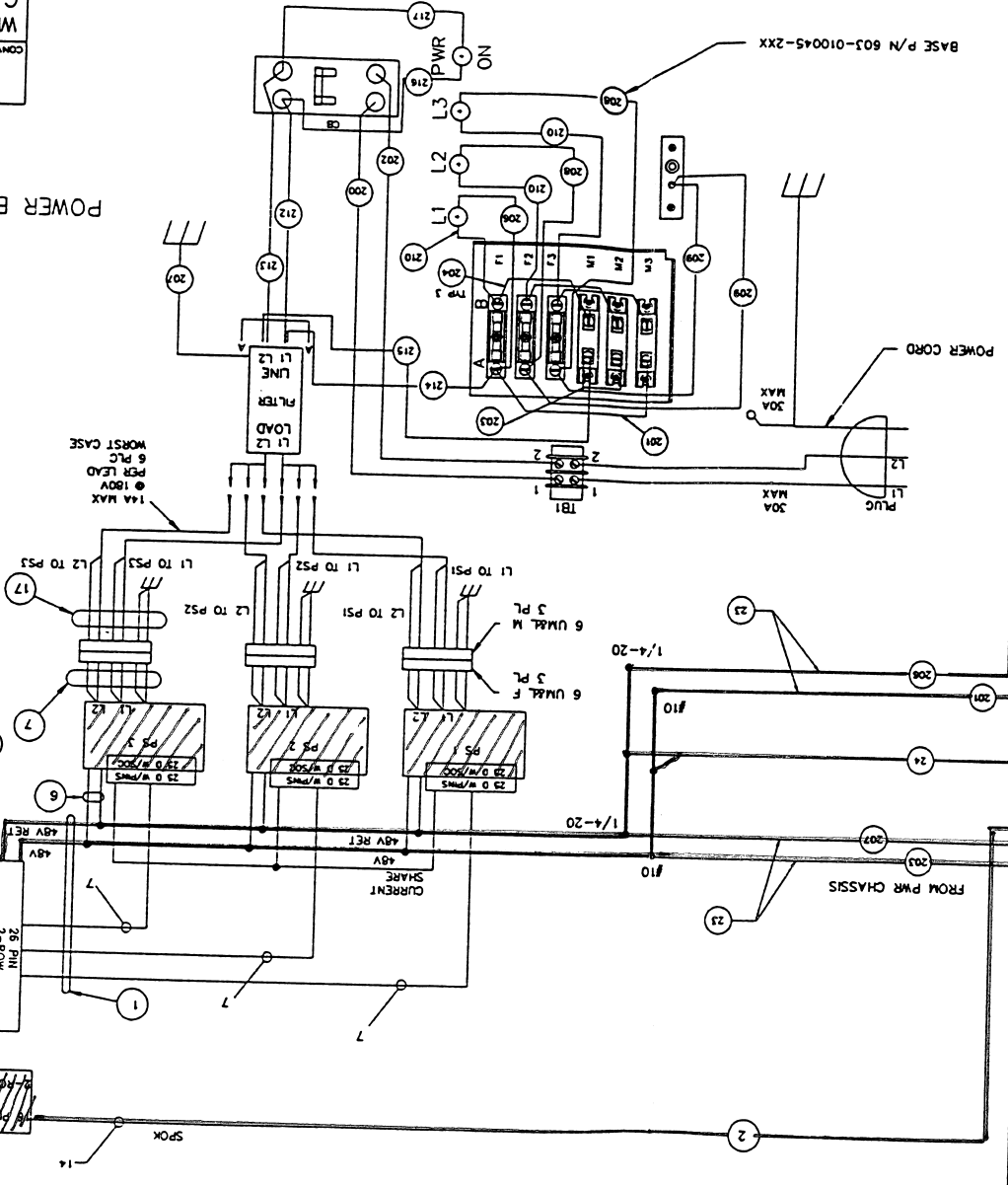
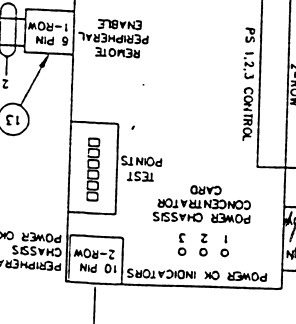
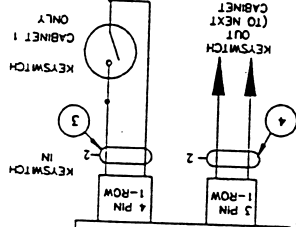
REV	ECH NO	DESCRIPTION	ORIG	APVD	DATE

REVISIONS

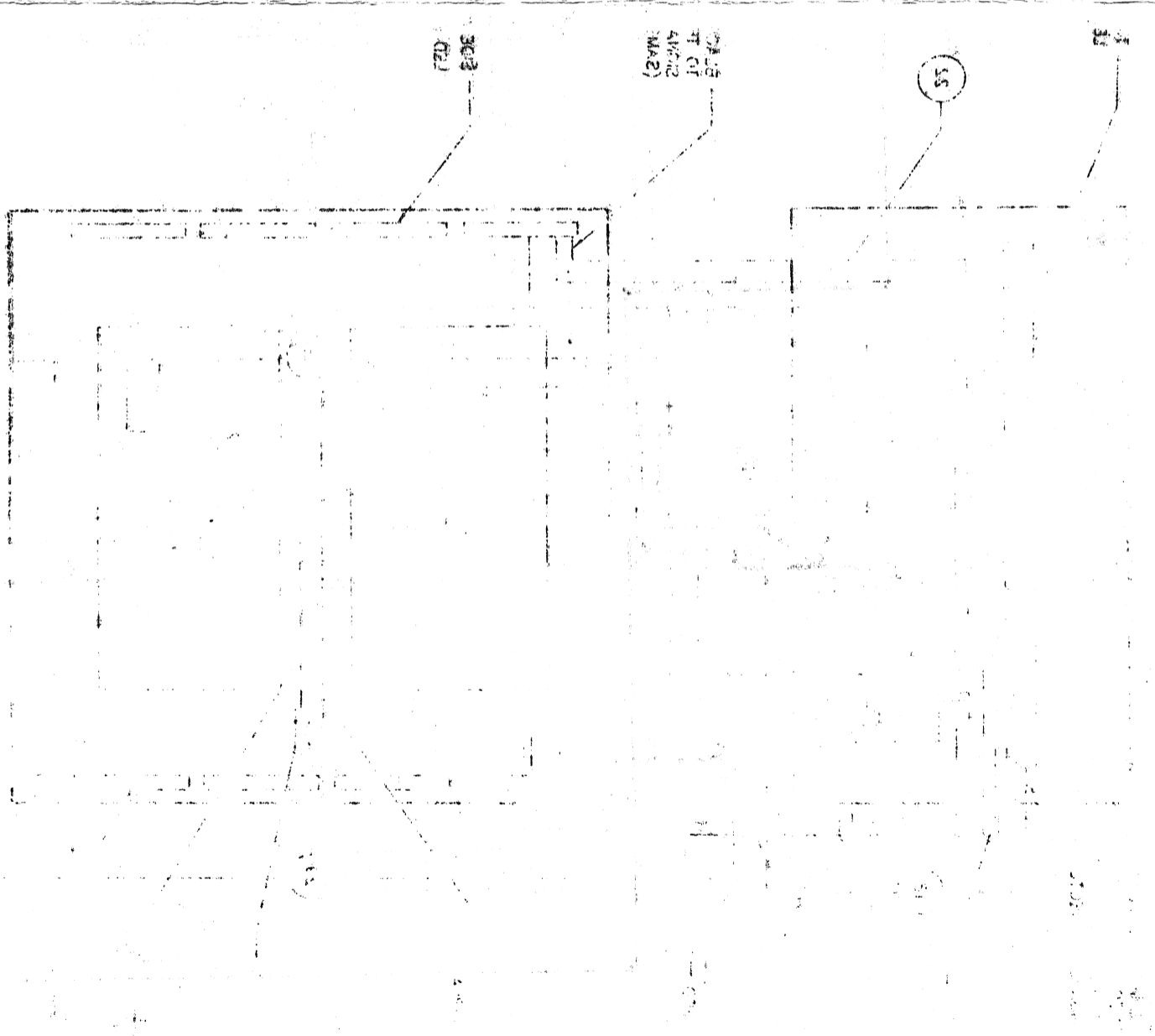
CONVEX CORPORATION HOUSTON, TEXAS 77002
 WIRING DIAGRAM, CAMELOT CABINET
 550-000053-300



POWER BAY



ALL WIRING 22AWG UNLESS OTHERWISE SPECIFIED
 10 11 12 13 14 15 16 17 18 19 20 21 22 23 24 25 26 27 28 29 30 31 32 33 34 35 36 37 38 39 40 41 42 43 44 45 46 47 48 49 50 51 52 53 54 55 56 57 58 59 60 61 62 63 64 65 66 67 68 69 70 71 72 73 74 75 76 77 78 79 80 81 82 83 84 85 86 87 88 89 90 91 92 93 94 95 96 97 98 99 100



3013
(72)

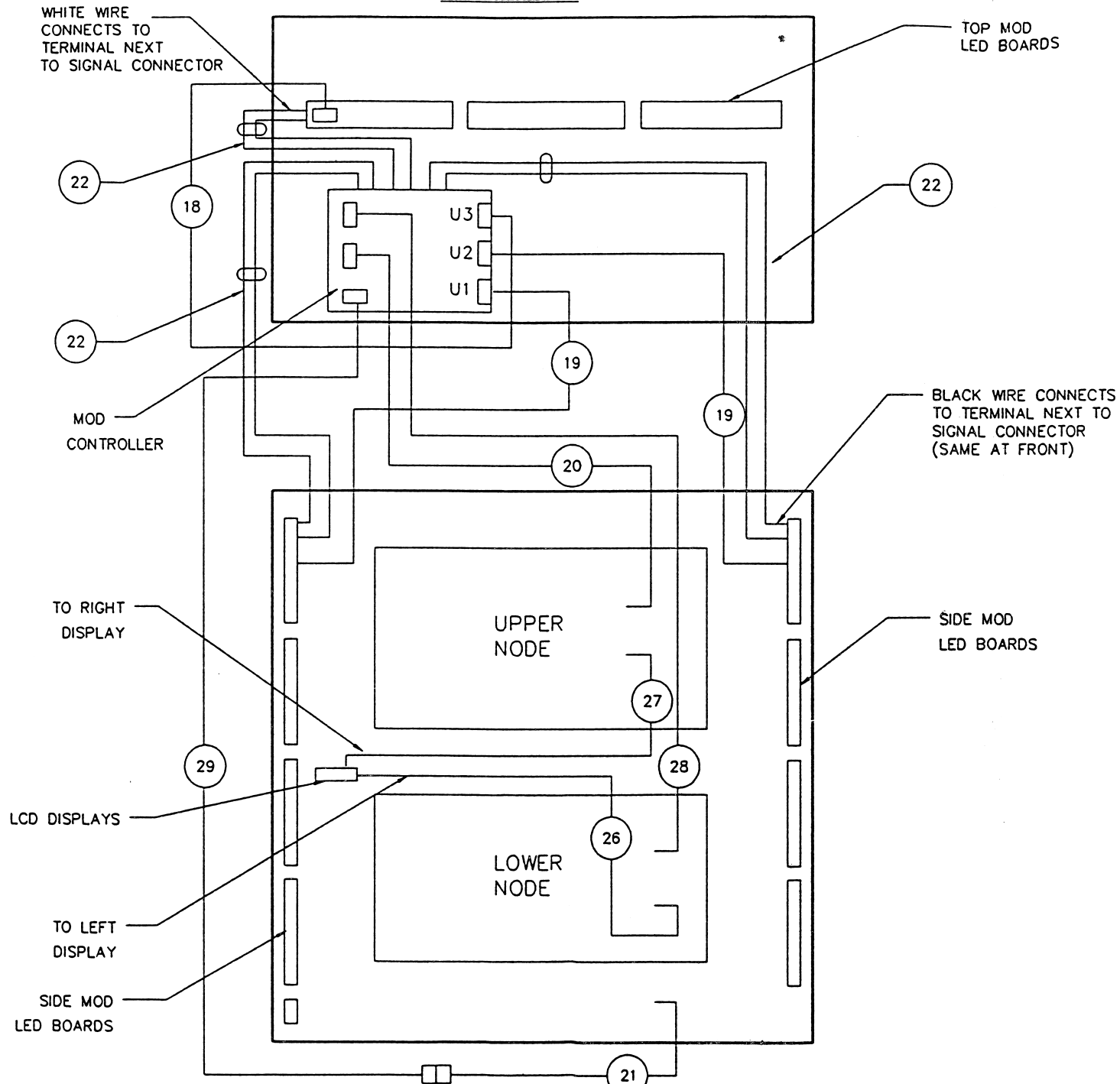
3013
(72)

55

ALL DIMENSIONS SHOWN IN THIS DRAWING ARE IN INCHES UNLESS OTHERWISE SPECIFIED.
 THIS DRAWING IS THE PROPERTY OF CONVEX COMPUTER CORPORATION. IT IS TO BE USED ONLY FOR THE PROJECT AND AT THE SITE OF AN OFFICE OF CONVEX IN LIMITED CIRCUMSTANCES.
 CONVEX COMPUTER CORPORATION

REV		ECN NO.	DESCRIPTION	REVISIONS		
ORIG	APVD	DATE				

TOP VIEW



RIGHT SIDE VIEW

CONVEX
 CONVEX COMPUTER CORPORATION RICHARDSON, TEXAS 75080

WIRING DIAGRAM, CAMELOT CABINET

SIZE	DRAWING NO.	REV
D	550-000053-300	E
SCALE	1/1	SHEET 3 OF 3

DRAWING NO. 550-000053-300 SHEET 3 OF 3 REV E

